



Quality Access Doors- **FAST!**

## STANDARD OPTIONS

Tapeable Access Panels (T.A.P.) allow access to utilities within ceilings while providing a seamless finish with the surrounding drywall.

There are no exposed hinges or fasteners, creating a nearly invisible access solution.

## FEATURES & BENEFITS

- Sleek, virtually invisible access panel
- Made from MDF (Medium Density Fiberboard)
- Installed during the drywall stage
- Taped into the drywall for a seamless finish
- Available in both ceiling and wall panels
- Frames available primed for easy install
- Panels can be made from moisture resistant MDF

## SPECIFICATIONS

**MATERIAL:** MDF (Medium Density Fiberboard)

**THICKNESS:** 1/2" or 5/8"

**APPROX WEIGHT 1/2" PANELS:**  
2.2 lbs/sq ft

**APPROX WEIGHT 5/8" PANELS:**  
2.7 lbs/sq ft

**FINISH:** All Raw MDF OR Primed Frame and Raw MDF Panel

**PRIMER TYPE (PRIMED PANELS ONLY):** Waterborne low-VOC primer

For a complete list of options visit  
[www.BestAccessDoors.ca](http://www.BestAccessDoors.ca)

# SUBMITTAL/TECHNICAL DATA SHEET

SKU: **BAC-TC34P**

## TAP CEILING PANEL FOR 5/8" DRYWALL

(3/4" PANEL & FRAME) – PRIMED FRAME



## DIMENSIONS AND APPEARANCE

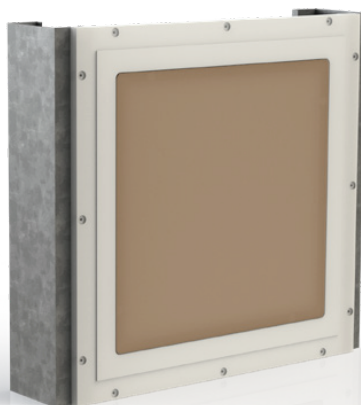
>> CLICK TO VIEW ADDITIONAL DETAILS AND PRICING <<

### SIZE AVAILABLE:

DOOR SIZE W x H	
6" x 6"	16" x 16"
8" x 8"	18" x 18"
10" x 10"	20" x 20"
12" x 12"	24" x 24"
14" x 14"	

Custom Size Available on Request



For Detailed Specifications See Submittal Sheet



## PROJECT DATA

Custom Sizes Available - Fast!

PROJECT NAME :	QTY	W	H	OPTIONS
ARCHITECT :				
DEALER :				
CONTRACTOR :				
LOCATION :	SPECIAL INSTRUCTIONS :			
DATE :	SUBMITTAL APPROVAL : (signature or stamp)			
TAGGING INSTRUCTIONS :				

Scan  or  Click



To view Pricing and  
Additional Product Info.



TELEPHONE:  
1-800-483-0823  
FAX:  
1-888-828-6021



385 WILSON STREET EAST,  
SUITE 302  
ANCASTER, ON, L9G 2C1  
CANADA

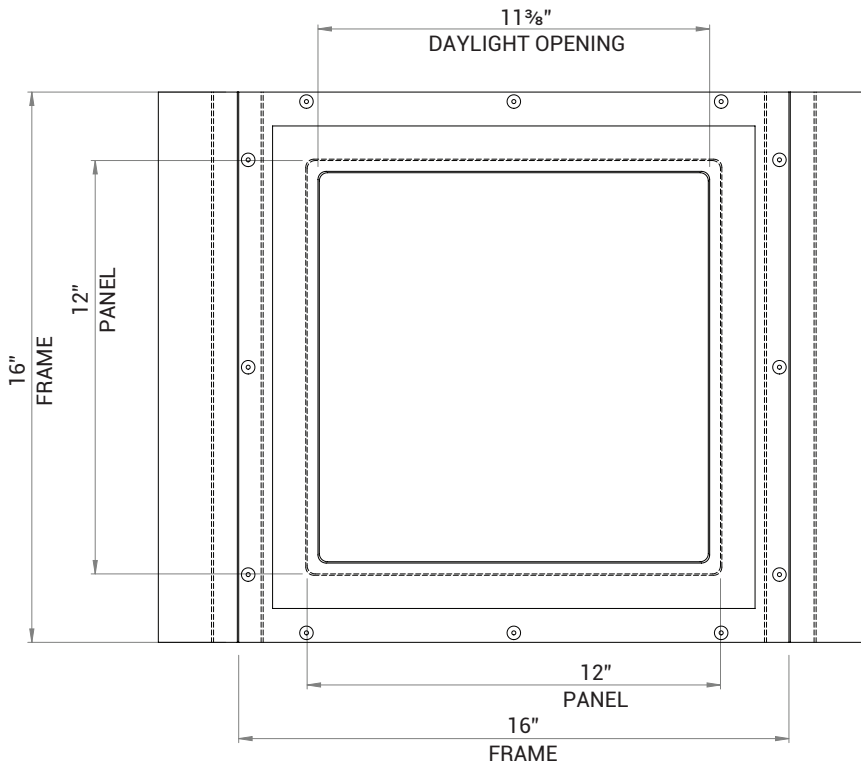


WEBSITE:  
[www.BestAccessDoors.ca](http://www.BestAccessDoors.ca)  
E-MAIL:  
[info@BestAccessDoors.ca](mailto:info@BestAccessDoors.ca)

**BAC-TC34P**

# TAP CEILING PANEL FOR 5/8" DRYWALL (3/4" PANEL & FRAME) – PRIMED FRAME

STANDARD CEILING PANEL DIMENSIONS:



**NOTES:**

- WHEN ORDERING USE "PANEL" SIZE, NOT FRAME SIZE. ALL SKUS ARE PANEL SIZES
- DRAWINGS SHOW A 1/2" PANEL, ALL DIMENSIONS EXCEPT FOR THICKNESS APPLY TO 5/8" PANELS
- DRAWINGS SHOW A 12" X 12" PANEL, THE DIFFERENCE FROM THE PANEL SIZE TO FRAME DIMENSION AND DAYLIGHT OPENING IS THE SAME FOR ALL PANEL SIZES
- ADDITIONAL SCREW HOLES AND MAGNETS ARE PROVIDED FOR LARGER PANEL SIZES

